

Fine Art Cross Stitching Pattern

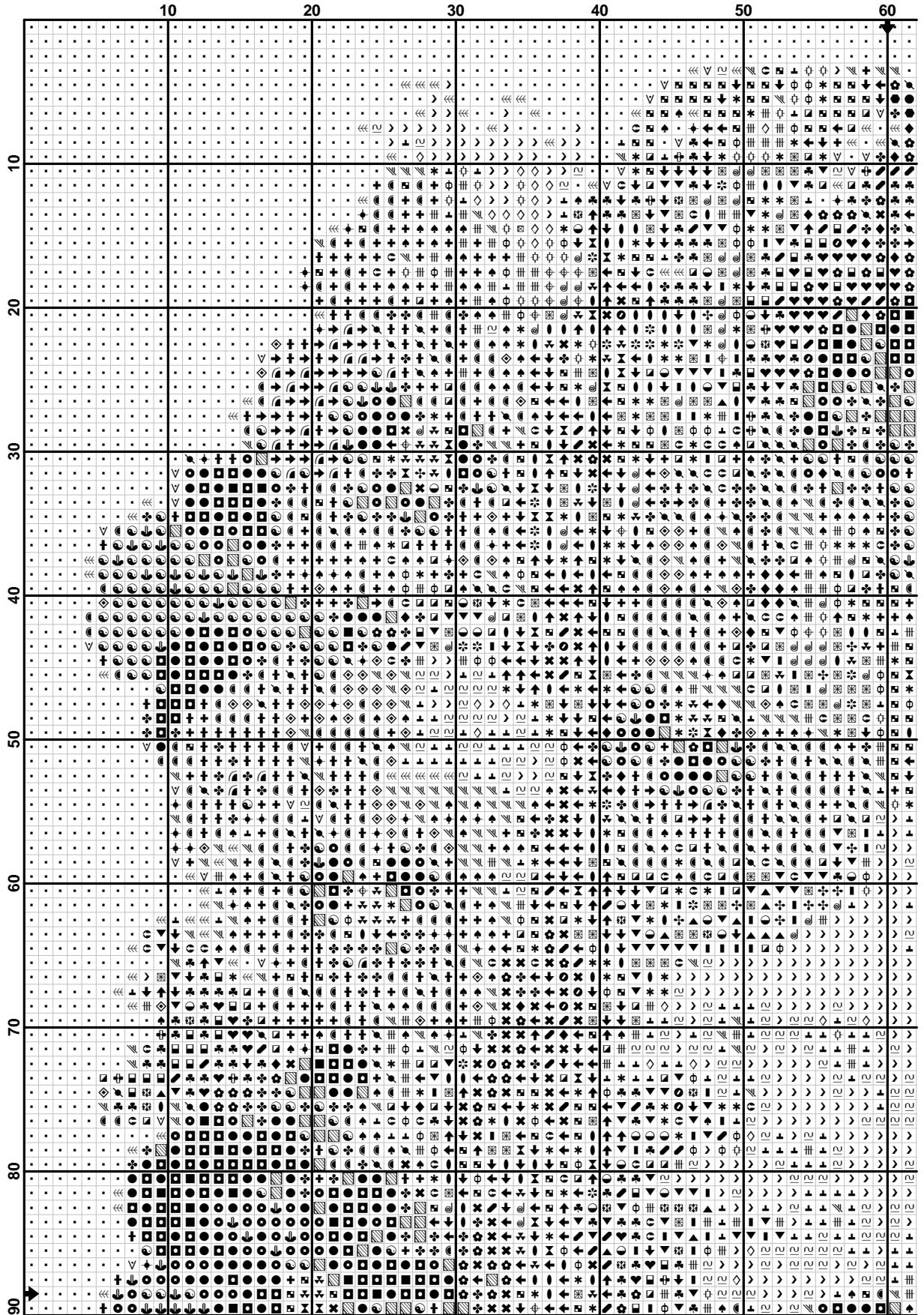
By Victorian For You

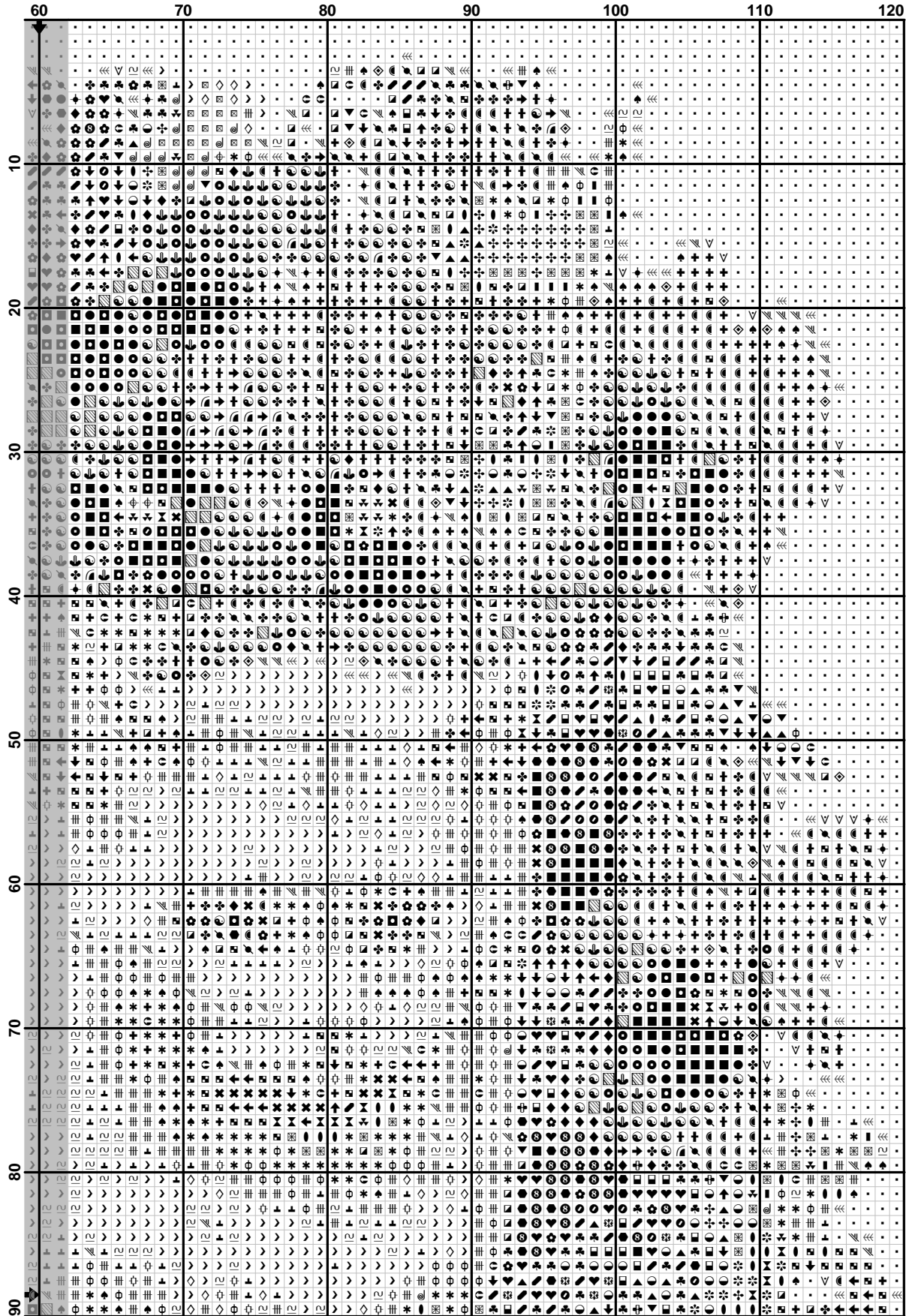


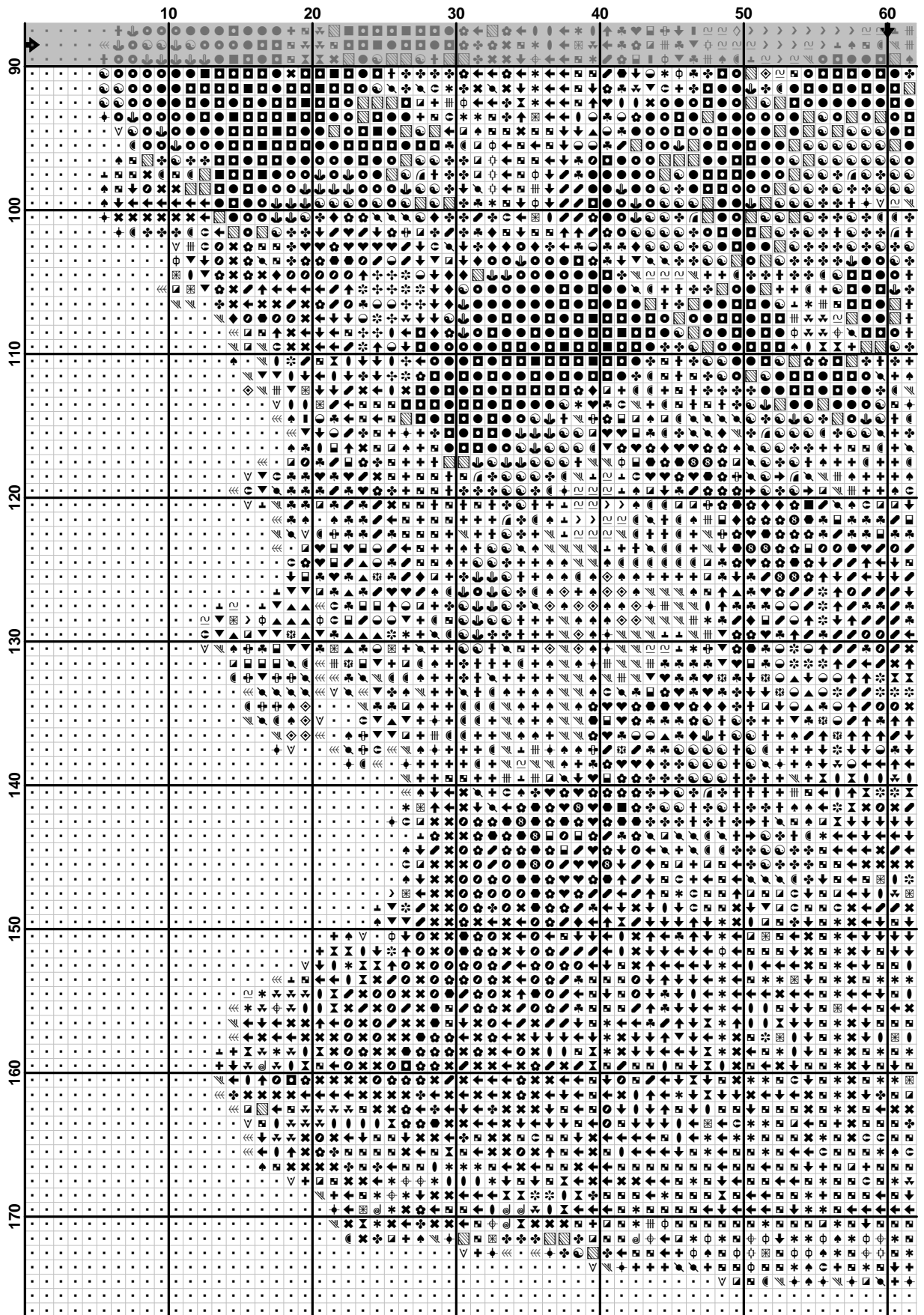
Kitten Pansy Basket Free

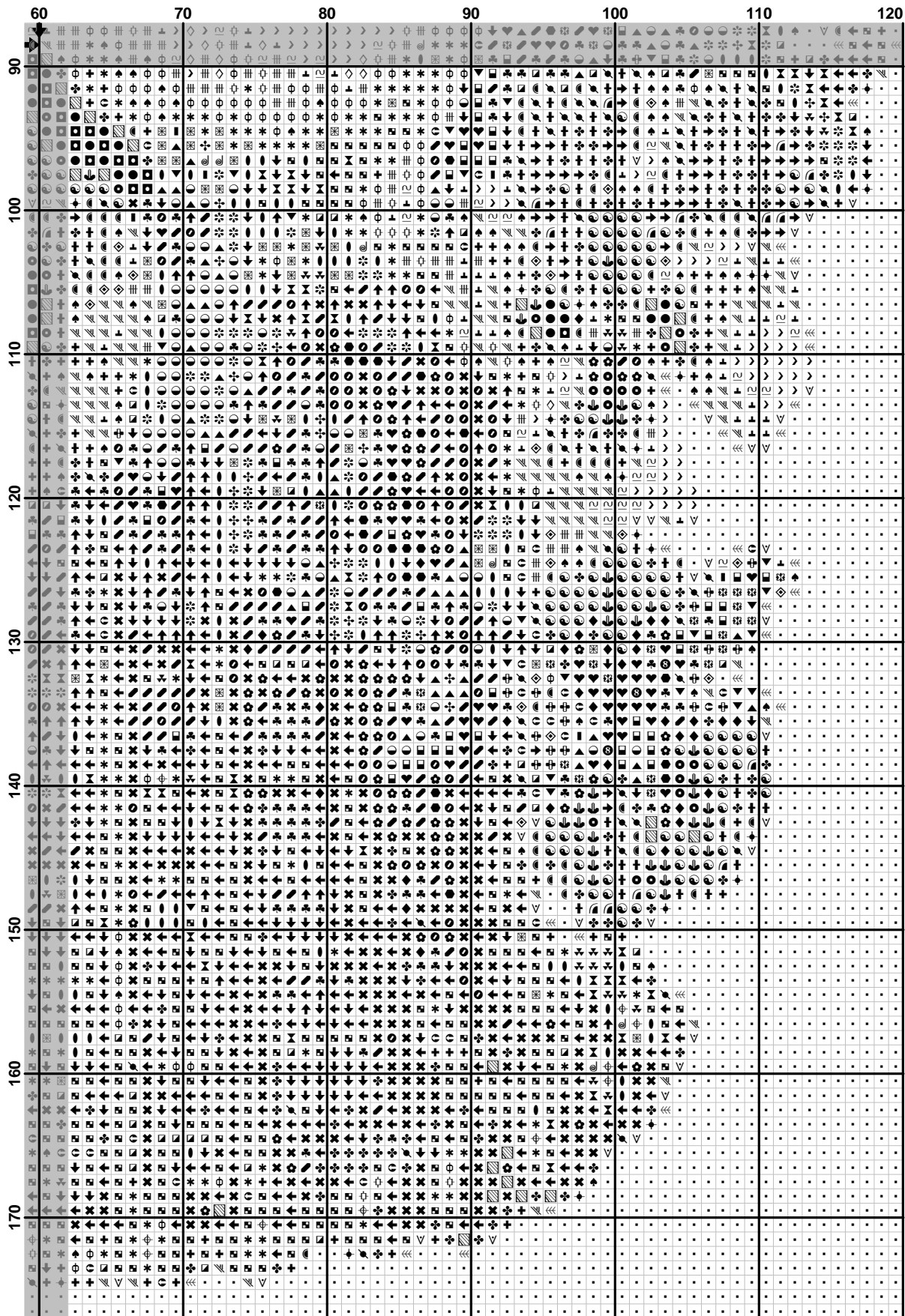
Pattern Design by Susan K. Headapohl, 2008
























Pattern Name: Kitten Pansy Basket Free
Copyright: c.2008, Victorian For You, all rights reserved
Fabric: Aida 24, White
 120w X 177h Stitches
Size(s): 24 Count, 5w X 7-3/8h in
 14 Count, 8-1/2w X 12-5/8h in
 18 Count, 6-5/8w X 9-3/4h in
 20 Count, 6w X 8-3/4h in

Floss Used for Full Stitches:

Symbol	Strands	Type	Number	Color
	2	DMC	158	Cornflower Blue-MD VY DK
	2	DMC	160	Gray Blue-MD
	2	DMC	161	Gray Blue
	2	DMC	168	Pewter-VY LT
	2	DMC	169	Pewter-LT
	2	DMC	318	Steel Gray-LT
	2	DMC	320	Pistachio Green-MD
	2	DMC	327	Violet-VY DK
	2	DMC	336	Navy Blue
	2	DMC	371	Mustard
	2	DMC	372	Mustard-LT
	2	DMC	413	Pewter Gray-DK
	2	DMC	414	Steel Gray-DK
	2	DMC	415	Pearl Gray
	2	DMC	436	Tan
	2	DMC	471	Avocado Green-VY LT
	2	DMC	520	Fern Green-DK
	2	DMC	524	Fern Green-VY LT
	2	DMC	550	Violet-VY DK
	2	DMC	612	Drab Brown-LT
	2	DMC	613	Drab Brown-VY LT
	2	DMC	640	Beige Gray-VY DK
	2	DMC	644	Beige Gray-MD
	2	DMC	647	Beaver Gray-MD
	2	DMC	648	Beaver Gray-LT
	2	DMC	727	Topaz-VY LT
	2	DMC	746	Off White
	2	DMC	762	Pearl Gray-VY LT
	2	DMC	791	Cornflower Blue-VY DK
	2	DMC	792	Cornflower Blue-DK
	2	DMC	822	Beige Gray-LT
	2	DMC	833	Golden Olive-LT
	2	DMC	844	Beaver Brown-UL DK
	2	DMC	931	Antique Blue-MD
	2	DMC	951	Tawny-LT
	2	DMC	987	Forest Green-DK
	2	DMC	988	Forest Green-MD
	2	DMC	3012	Khaki Green-MD
	2	DMC	3024	Brown Gray-VY LT
	2	DMC	3033	Mocha Brown-VY LT
	2	DMC	3042	Antique Violet-LT
	2	DMC	3046	Yellow Beige-MD
	2	DMC	3348	Yellow Green-LT
	2	DMC	3363	Pine Green-MD
	2	DMC	3364	Pine Green
	2	DMC	3740	Antique Violet-DK
	2	DMC	3750	Antique Blue-VY DK

Symbol	Strands	Type	Number	Color
	2	DMC	3756	Baby Blue-UL VY LT
	2	DMC	3768	Gray Green-DK
	2	DMC	3772	Desert Sand-VY DK
	2	DMC	3774	Desert Sand-VY LT
	2	DMC	3782	Mocha Brown-LT
	2	DMC	3787	Brown Gray-DK
	2	DMC	3790	Beige Gray-UL DK
	2	DMC	3799	Pewter Gray-VY DK
	2	DMC	3807	Cornflower Blue
	2	DMC	3856	Mahogany-UL VY LT
	2	DMC	3860	Cocoa
	2	DMC	3861	Cocoa-LT
	2	DMC	B5200	Snow White

Notes:

This pattern is computer created from scans of original antique ephemera. It does have some confetti stitches that are necessary for definition.

This pattern does not contain any fractional stitches and does not need backstitching. I do not blend colors.

Use 2 strands of floss to stitch the pattern depending on the cloth count you are using.

To work the pattern start in the upper left hand square and work the complete 10 x 10 square. Move on to the next 10 x 10 and so on until the pattern is complete.

We would really like to hear from you about your progress. When you have completed the pattern we would love to display it on our website. I would also like to offer you a free pattern for the use of your image display

If you have any questions please email me at sales.crosstitch@victorianclipartdelite.com

Note:

This pattern is for personal use only.

Usage Summary

Strands Per Skein: 6

Skein Length: 313.0 in

Type	Number	Full	Half	Quarter	Petite	Back(in)	Str(in)	Spec(in)	French	Bead	Skein Est.
DMC 158	158	300	0	0	0	0.0	0.0	0.0	0	0	1.000
DMC 160	160	454	0	0	0	0.0	0.0	0.0	0	0	1.000
DMC 161	161	744	0	0	0	0.0	0.0	0.0	0	0	1.000
DMC 168	168	126	0	0	0	0.0	0.0	0.0	0	0	1.000
DMC 169	169	341	0	0	0	0.0	0.0	0.0	0	0	1.000
DMC 318	318	600	0	0	0	0.0	0.0	0.0	0	0	1.000
DMC 320	320	52	0	0	0	0.0	0.0	0.0	0	0	1.000
DMC 327	327	225	0	0	0	0.0	0.0	0.0	0	0	1.000
DMC 336	336	135	0	0	0	0.0	0.0	0.0	0	0	1.000
DMC 371	371	141	0	0	0	0.0	0.0	0.0	0	0	1.000
DMC 372	372	218	0	0	0	0.0	0.0	0.0	0	0	1.000
DMC 413	413	328	0	0	0	0.0	0.0	0.0	0	0	1.000
DMC 414	414	739	0	0	0	0.0	0.0	0.0	0	0	1.000
DMC 415	415	126	0	0	0	0.0	0.0	0.0	0	0	1.000
DMC 436	436	103	0	0	0	0.0	0.0	0.0	0	0	1.000
DMC 471	471	105	0	0	0	0.0	0.0	0.0	0	0	1.000
DMC 520	520	186	0	0	0	0.0	0.0	0.0	0	0	1.000
DMC 524	524	173	0	0	0	0.0	0.0	0.0	0	0	1.000
DMC 550	550	404	0	0	0	0.0	0.0	0.0	0	0	1.000
DMC 612	612	300	0	0	0	0.0	0.0	0.0	0	0	1.000
DMC 613	613	258	0	0	0	0.0	0.0	0.0	0	0	1.000
DMC 640	640	553	0	0	0	0.0	0.0	0.0	0	0	1.000
DMC 644	644	352	0	0	0	0.0	0.0	0.0	0	0	1.000
DMC 647	647	220	0	0	0	0.0	0.0	0.0	0	0	1.000
DMC 648	648	410	0	0	0	0.0	0.0	0.0	0	0	1.000
DMC 727	727	17	0	0	0	0.0	0.0	0.0	0	0	1.000
DMC 746	746	687	0	0	0	0.0	0.0	0.0	0	0	1.000
DMC 762	762	103	0	0	0	0.0	0.0	0.0	0	0	1.000
DMC 791	791	417	0	0	0	0.0	0.0	0.0	0	0	1.000
DMC 792	792	225	0	0	0	0.0	0.0	0.0	0	0	1.000
DMC 822	822	336	0	0	0	0.0	0.0	0.0	0	0	1.000
DMC 833	833	88	0	0	0	0.0	0.0	0.0	0	0	1.000
DMC 844	844	199	0	0	0	0.0	0.0	0.0	0	0	1.000
DMC 931	931	124	0	0	0	0.0	0.0	0.0	0	0	1.000
DMC 951	951	71	0	0	0	0.0	0.0	0.0	0	0	1.000
DMC 987	987	146	0	0	0	0.0	0.0	0.0	0	0	1.000
DMC 988	988	58	0	0	0	0.0	0.0	0.0	0	0	1.000
DMC 3012	3012	191	0	0	0	0.0	0.0	0.0	0	0	1.000
DMC 3024	3024	382	0	0	0	0.0	0.0	0.0	0	0	1.000
DMC 3033	3033	379	0	0	0	0.0	0.0	0.0	0	0	1.000
DMC 3042	3042	542	0	0	0	0.0	0.0	0.0	0	0	1.000
DMC 3046	3046	74	0	0	0	0.0	0.0	0.0	0	0	1.000
DMC 3348	3348	62	0	0	0	0.0	0.0	0.0	0	0	1.000
DMC 3363	3363	432	0	0	0	0.0	0.0	0.0	0	0	1.000
DMC 3364	3364	164	0	0	0	0.0	0.0	0.0	0	0	1.000
DMC 3740	3740	612	0	0	0	0.0	0.0	0.0	0	0	1.000
DMC 3750	3750	53	0	0	0	0.0	0.0	0.0	0	0	1.000
DMC 3756	3756	177	0	0	0	0.0	0.0	0.0	0	0	1.000
DMC 3768	3768	120	0	0	0	0.0	0.0	0.0	0	0	1.000
DMC 3772	3772	136	0	0	0	0.0	0.0	0.0	0	0	1.000
DMC 3774	3774	124	0	0	0	0.0	0.0	0.0	0	0	1.000
DMC 3782	3782	458	0	0	0	0.0	0.0	0.0	0	0	1.000

Type	Number	Full	Half	Quarter	Petite	Back(in)	Str(in)	Spec(in)	French	Bead	Skein Est.
■ DMC	3787	378	0	0	0	0.0	0.0	0.0	0	0	1.000
■ DMC	3790	193	0	0	0	0.0	0.0	0.0	0	0	1.000
■ DMC	3799	111	0	0	0	0.0	0.0	0.0	0	0	1.000
■ DMC	3807	65	0	0	0	0.0	0.0	0.0	0	0	1.000
■ DMC	3856	36	0	0	0	0.0	0.0	0.0	0	0	1.000
■ DMC	3860	737	0	0	0	0.0	0.0	0.0	0	0	1.000
■ DMC	3861	922	0	0	0	0.0	0.0	0.0	0	0	1.000
□ DMC	B5200	4828	0	0	0	0.0	0.0	0.0	0	0	2.000