



[www.Yiotas-XStitch.com](http://www.Yiotas-XStitch.com)

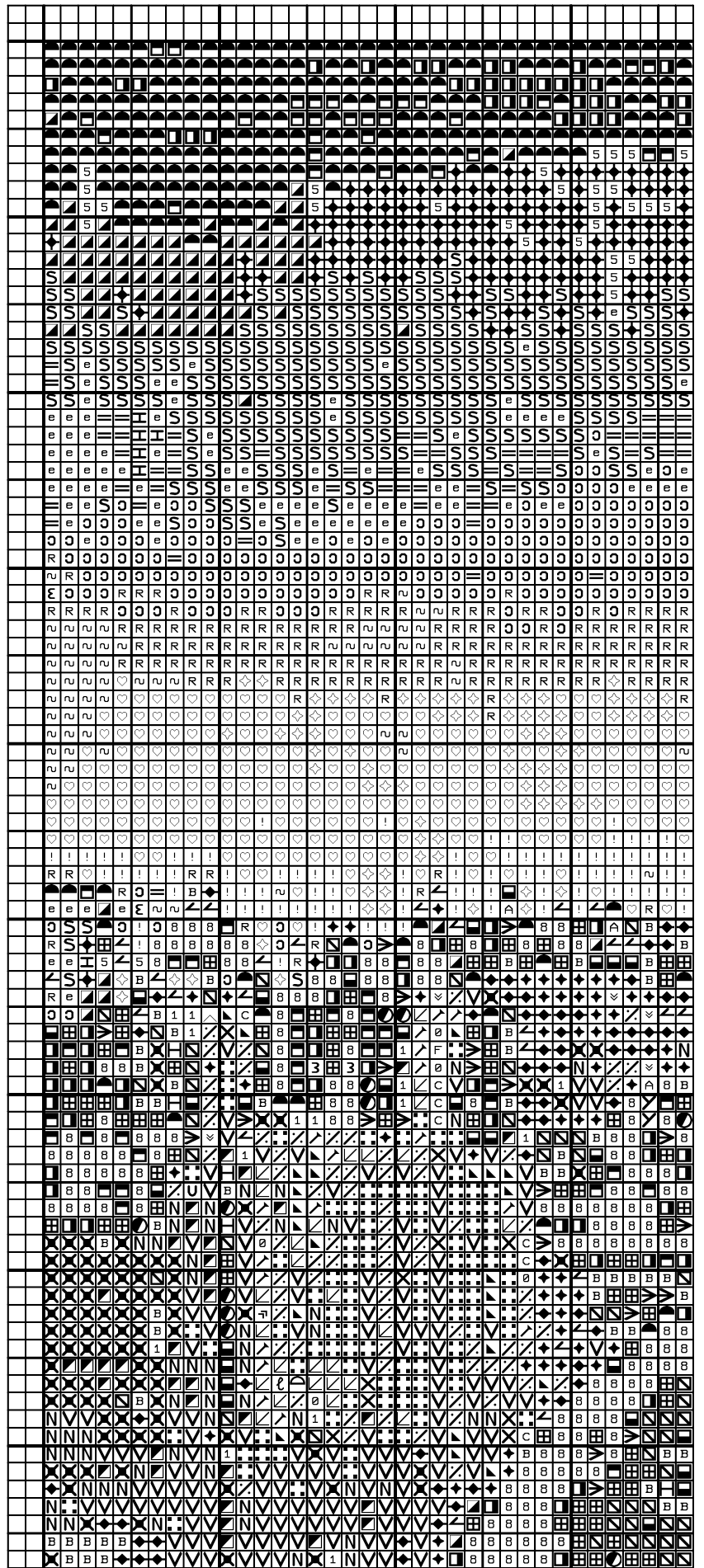
Fine art & victorian cross stitch patterns via download or post

*Finished cross stitch picture*

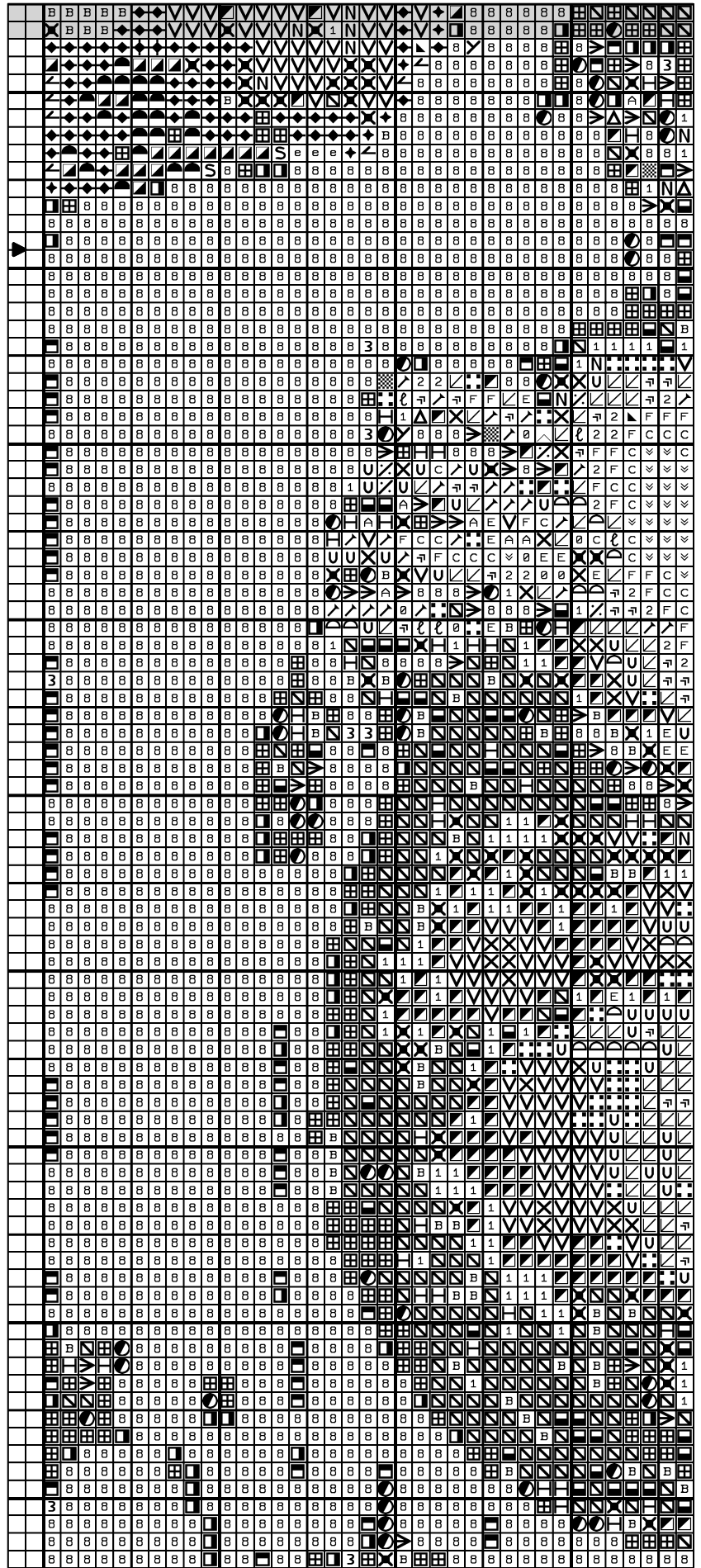


*Original picture*

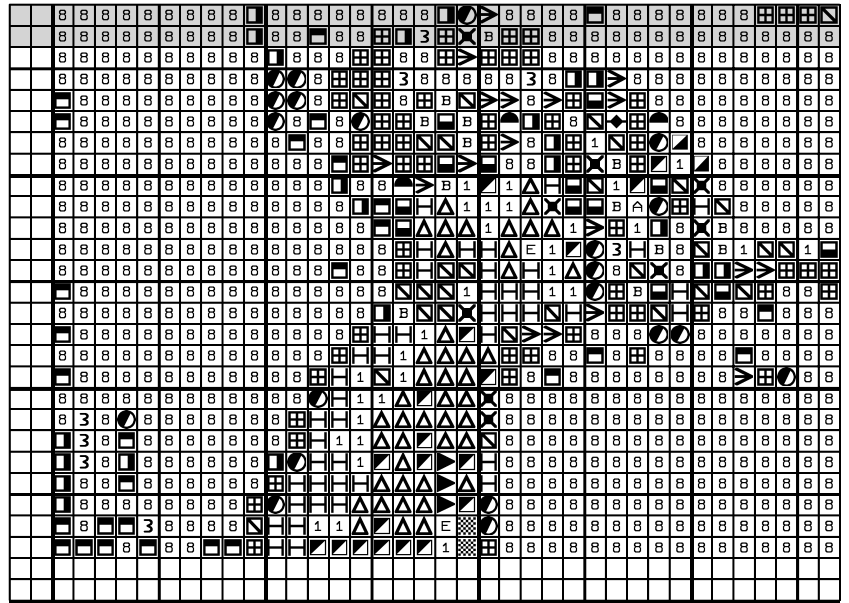




Madonna with child by Raphael



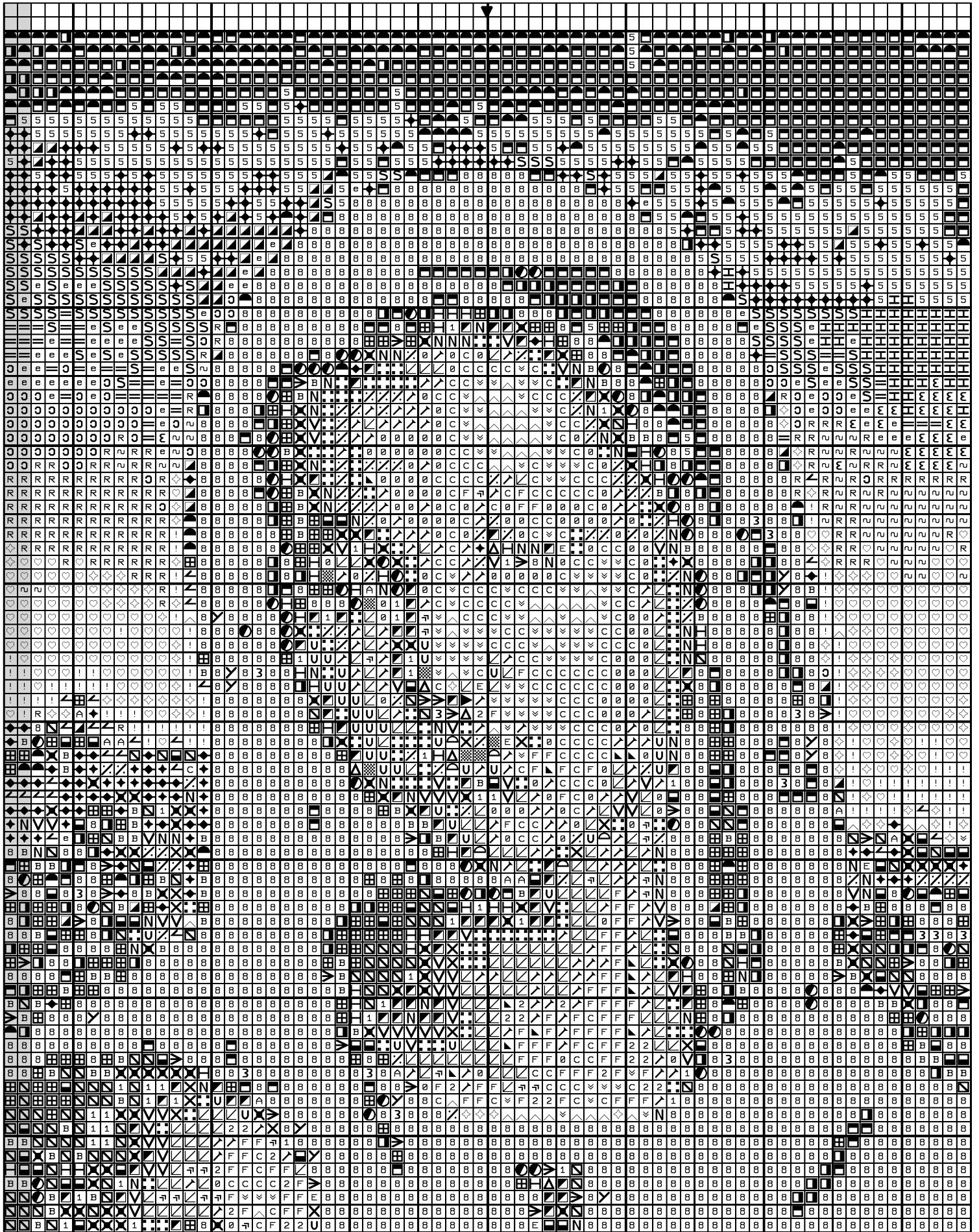
Madonna with child by Raphael



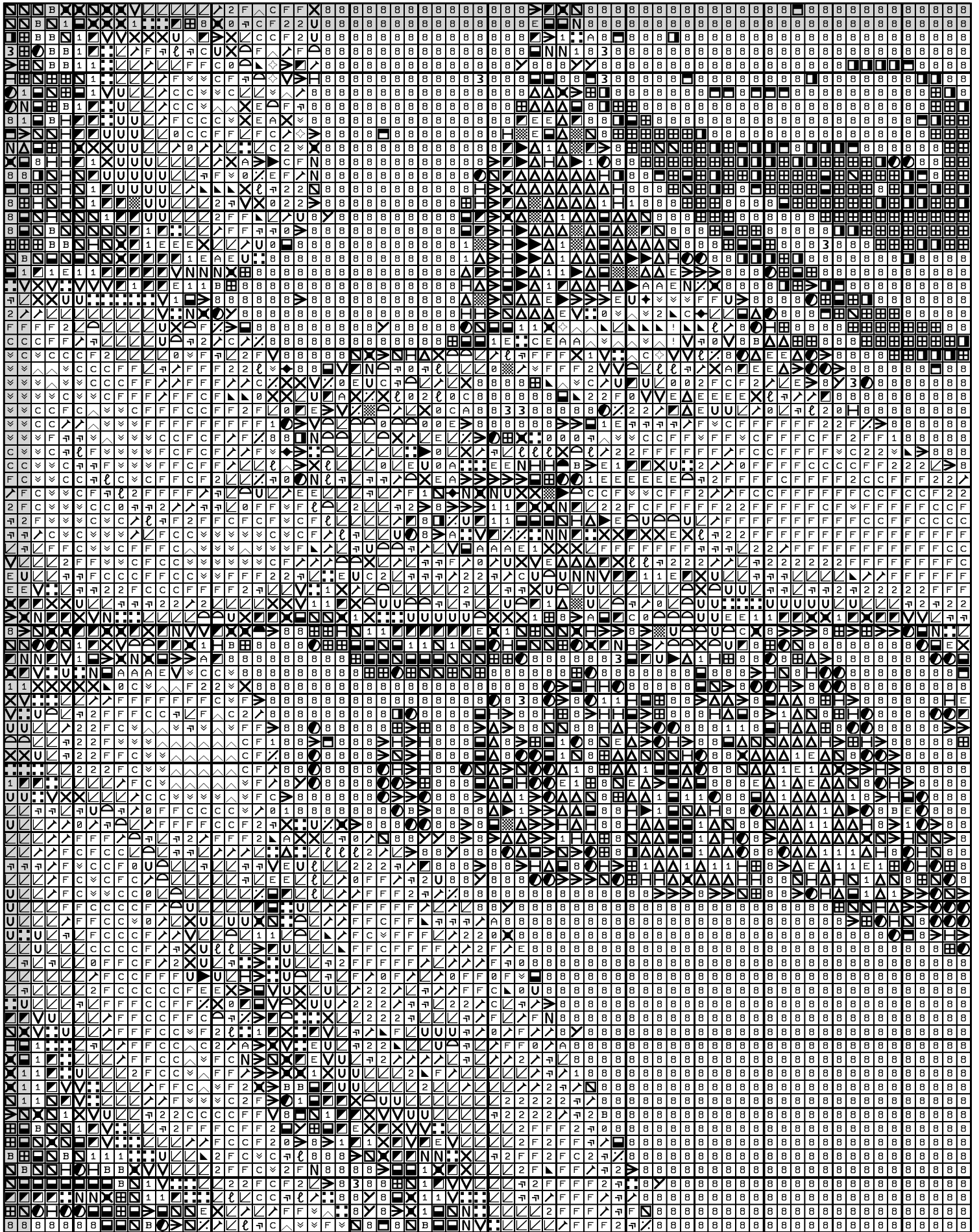
Copyright © Yiotas XStitch



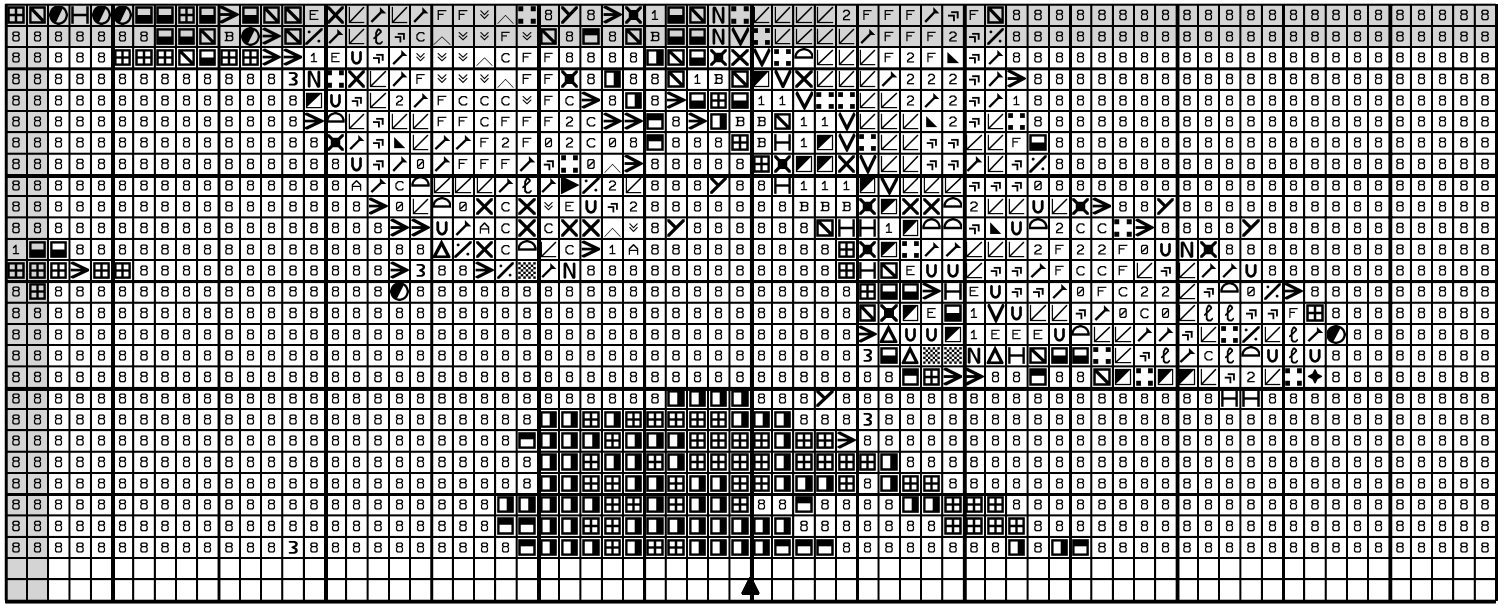
Madonna with child by Raphael



Madonna with child by Raphael



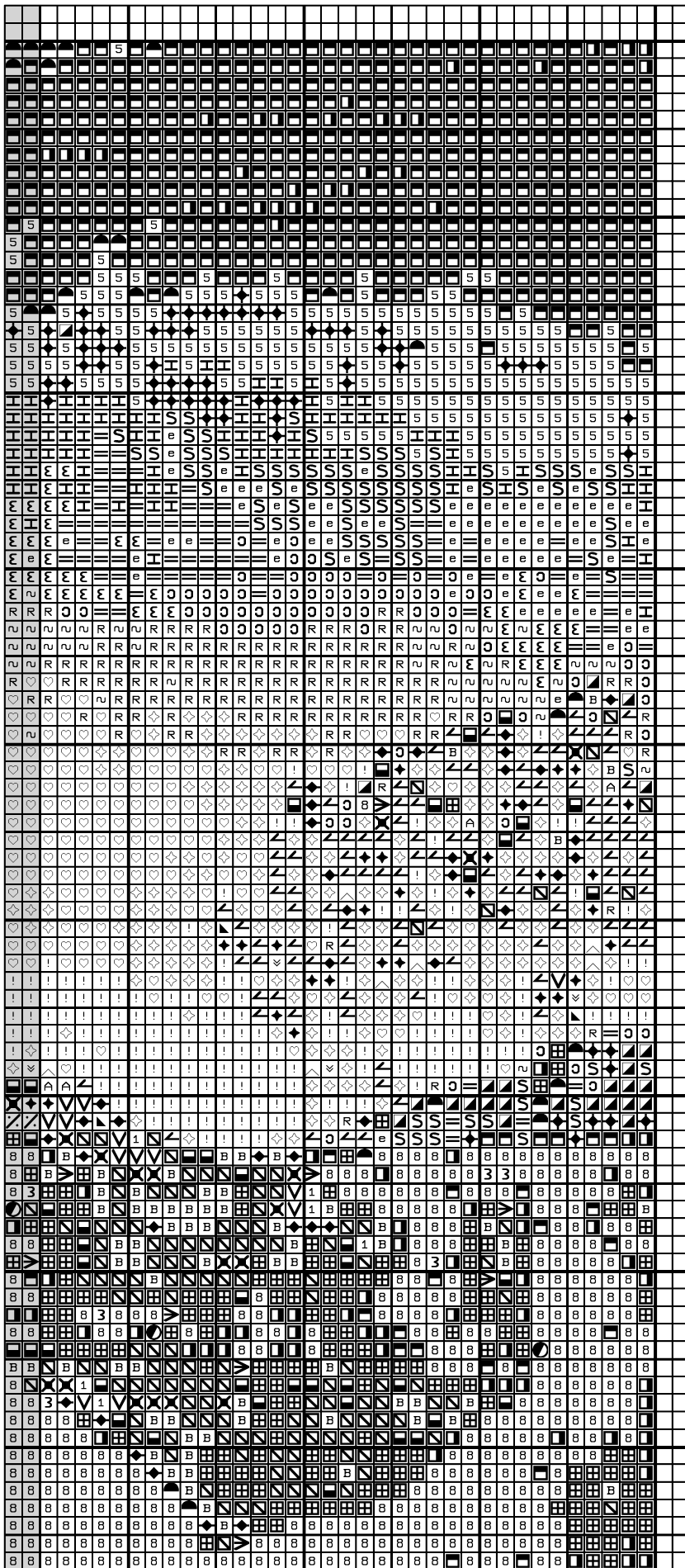
Madonna with child by Raphael



Copyright © Yiotas XStitch

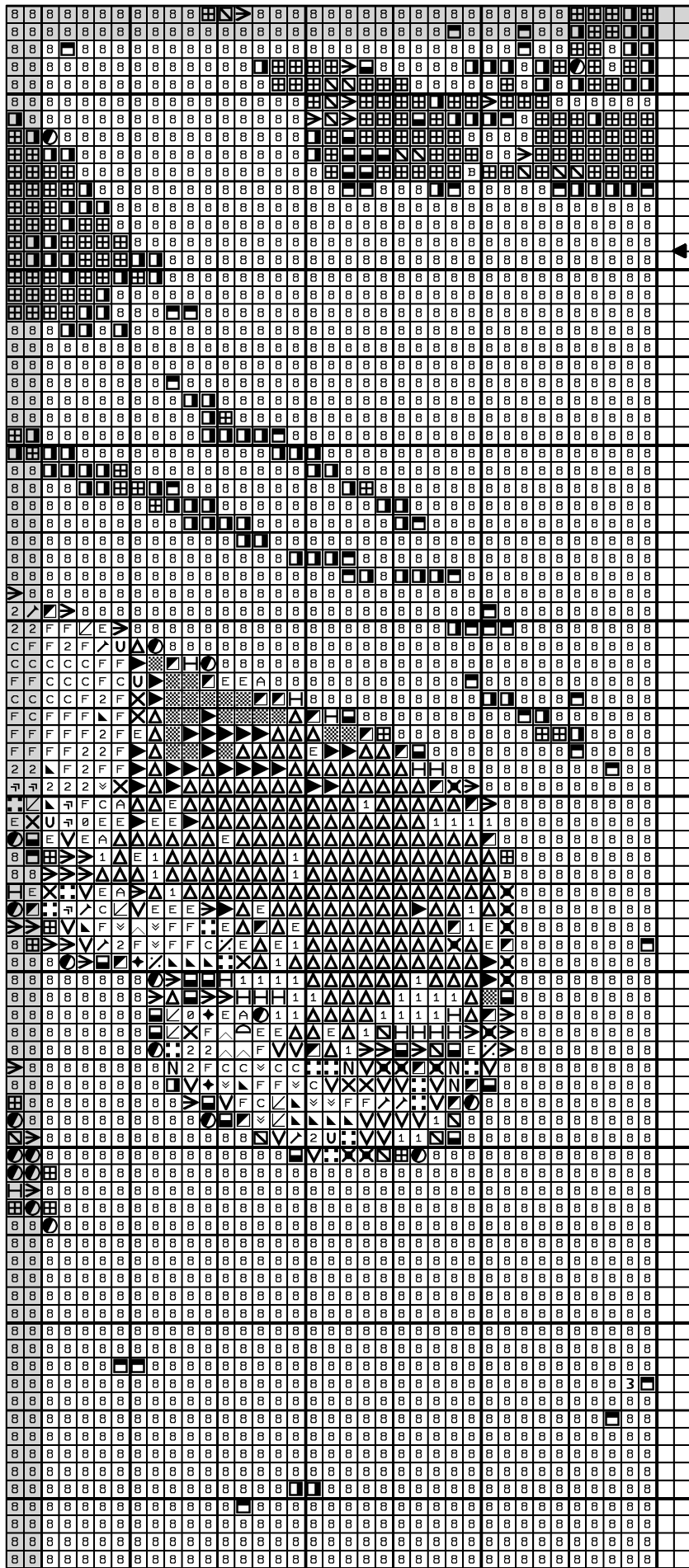


Madonna with child by Raphael

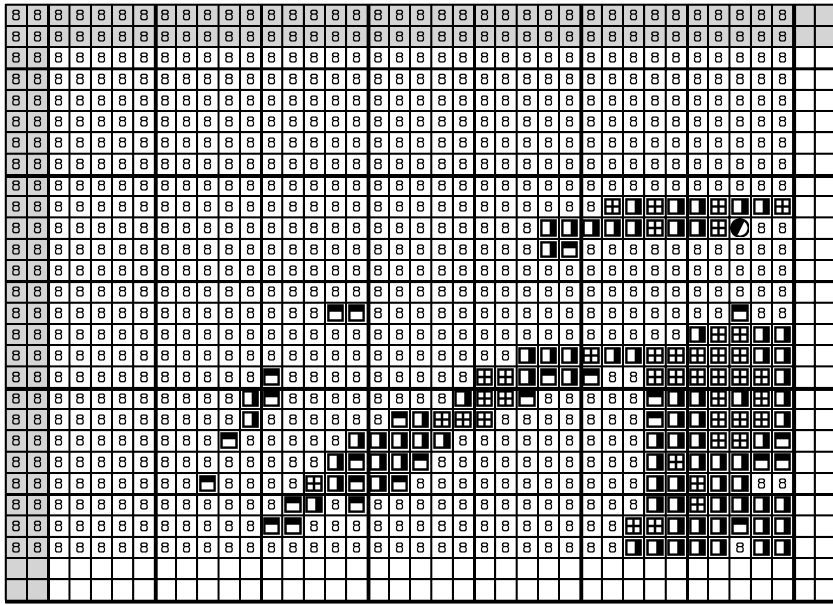




Madonna with child by Raphael



Madonna with child by Raphael



Copyright © Yiotas XStitch



Madonna with child by Raphael

♡	White	DMC White
℞	Mouse grey	168
S	Pewter grey	169
8	Black	310
H	Antique lilac	315
5	Steel grey	317
e	Granite grey	318
◆	Medium mustard	370
N	Clay brown	407
◆	Light oak	422
X	Cigar brown	434
⋮	Tabacco brown	435
⋮	Teddy brown	436
◐	Stone grey	535
↖	Rope brown	613
✕	Cocoa	632
◐	Platinum grey	646
◀	Sand gold	677
℘	Tangerine orange	741
↻	Light tangerine	742
2	Medium yellow	743
F	Grapefruit yellow	744
▷	Deep wine red	814
▷	Brass	833
B	Dark wood	838
◻	Pepper black	844
3	Deep forest green	890
D	Terracotta	922
◻	Dark pearl green	924
✦	Grey green	926
	Oyster grey	927
H	Seagull blue	932
◻	Espresso brown	938
Y	Dark navy blue	939
∟	Caramel brown	977
▣	Cliff grey	3021
◐	Light platinum grey	3023
◐	Dark Mocha brown	3031
∧	Pale yellow	3078
▷	Dark salmon	3328
A	Ebony	3371
▣	Blush pink	3712
△	Rosebush pink	3722
●	Dark antique violet	3740
ε	Light porcelain blue	3752
2	Moonlight blue	3753
U	Dark nutmeg brown	3776
E	Leather red	3777
∅	Beech brown	3827
∇	Oaktree brown	3828
↘	Spicey gold	3854
C	Autumn gold	3855
1	Dark red wine	3857
◐	Medium red wine	3858
◇	Garlic cream	3866
!	Bright white	B5200

Stitch Count 140 x 198

Design Area 25.4 x 35.9 cm at 55 sts per 10cm

Note: Pattern is made for 14 count aida

Design By: Yiotas XStitch

Copyright © By: Yiotas XStitch



### **\*\*\* INSTRUCTIONS \*\*\***

This cross stitch chart/pattern has no quarter or half stitches, no metallic threads, no beads, just full stitches. There are several pages for this chart/pattern. You will need to lay out all pages and it should look something like this:

Page 1	Page 2	Page 3
Page 4	Page 5	Page 6
Page 7	Page 8	Page 9

At the bottom left side there is a small box that tells you which page of the whole chart you are looking at. This should make it easier to put together and lay out the pages.

Once you have your pages layed out, look for the center arrow. There is a small arrow on one of the top row pages, then another small arrow on the left middle page. Follow these 2 arrows until the intercept. This should be your first stitch on your design.

Visit [http://yiotas-xstitch.com/osCommerce/Calculator\\_Conversion.php](http://yiotas-xstitch.com/osCommerce/Calculator_Conversion.php) for:

1. Cross stitch calculator
2. Stitches to inches
3. DMC floss color chart
4. Floss conversion calculator

#### **1. Cross stitch calculator:**

It will tell you stitched size, and suggests fabric size, needle, and number of strands of floss

#### **2. Stitches to inches:**

Use this chart to determine the finished size of a design for various fabric counts. Find the stitch count of the fabric on the top line. Find the number of stitches for the design at the right. The stitched size is the intersection.

#### **3. DMC floss color chart:**

This will give you a color picture of the DMC floss colors arranged in color families (not by color number). The picture comes from a DMC thread color book. Although not exact, the colors are fairly accurate. Remember that the colors you will see depend greatly on the quality and calibration of your computer screen. The picture does not include the 27 new colors added early 2002.

This color chart is handy if you want to change colors in a chart. For example, say you want to change part of a design from red to blue. The red in the design has shadowing (red with 2 shades of darker red to create the shadow or texture). An easy way to convert to blues would be to pick all the shades of blue from the same family.

#### **4. Floss conversion calculator:**

Use this calculator to convert multiple floss codes from Bucilla, Dimensions, J & P Coats, Anchor, and DMC to any of the others.

#### **Free cross stitch charts/patterns:**

As a gratitude to your custom, I would like to offer you free cross stitch charts/patterns to download and print from your computer. Please visit: [www.yiotas-xstitch.com](http://www.yiotas-xstitch.com) and click on the the category "Free charts".

\*~\*Thank you for shopping from Yiotas XStitch shop. Please come again soon.\*~\*